

BS-536

MANUAL CALL POINT



TECHNICAL CHARACTERISTICS

OPERATION VOLTAGE	10-30V DC
ALARM CURRENT	8-30mA
ALARM RESISTOR	470ohms
USE	Indoor
TYPE	Type A
DEGREES OF COVER PROTECTION	IP 20
PRODUCED IN ACCORDANCE WITH	EN 54-11
OPERATION TEMPERATURE RANGE	-10 to 70 °C
RELATIVE HUMIDITY	Up to 95%
CONSTRUCTION MATERIALS	ABS/PC
EXTERNAL DIMENSIONS	98 x 94 x 58 mm
TYPICAL WEIGHT	180gr.
GUARANTEE	2 years

Thank you for your trust in our products
Olympia Electronics - European manufacturer

GENERAL

This is an emergency fire alarm button. Use this call point to manually activate the alarm system at the sight of fire. It is essential for it to exist in cooperation with other detectors. Using it is very simple. All you have to do is push the see-through plastic cover and the call point automatically activates the alarm system.

In this case the see-through plastic cover does not brake but it can be reset to it's original position with the special plastic key which is included.

This way you can test a specific call point and maintenance the fire detection panel as well.

It is used as a signal to evacuate the building in case of fire.

In every fire detection system it is essential that you place one call point besides the control panel and the rest mainly in corridors and exits of the building.

Installation and Connection

1. First, unfasten the retailing screws and remove the plastic cover.

2. Remove carefully the interior parts of the device and use the supplied mounting parts to the A-A or B - B positions (Figure 2).

3. During their installation must be attention taken that the distance between two buttons does not exceed 30 m and all buttons should be placed at a height of about 1.4 m from the floor.(Figure 1).

4. Inside the call point there are four special terminal blocks with indications IN and OUT used to fasten the cables. The connection is made direct to the zone of the control panel regardless of polarity. If in a zone there are more than one then they are connected in parallel. If in the same zone there are detectors then the call point is connected in parallel with the detectors of this specific zone.

If the last device installed on a zone is a call point then you must place on it the resistor which was removed from that zone. The Figure 4 below shows the connections between two call points and a detector to a zone of a fire detection panel It also shows the connection of the resistor to the last button of that zone.

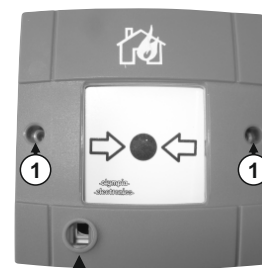
5. Reinstall the parts which have been removed during the previous steps and the device is ready to operate.

Certification

The manual call point BS-536 is certified from EVPU and LPCB (1010c/01). Also EVPU controls the production under CPD number :

BS-536	manual call point	
1293-CPD-0256		11
EN-54-11: 2001 + A1: 2005		
KOLINDROS PIERIAS		
60061 HELLAS		for a safer world

INSTALLATION INSTRUCTIONS



Plastic key input
Figure 1

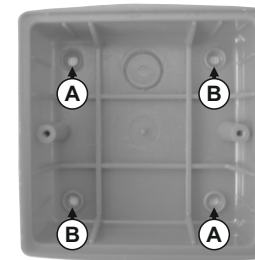


Figure 2

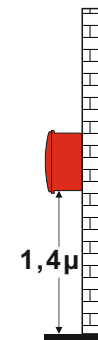


Figure 3

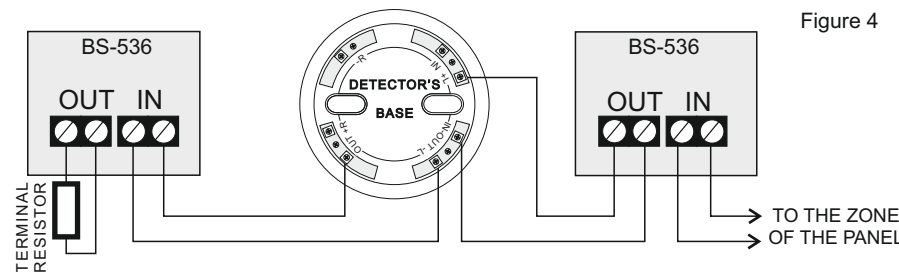
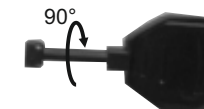


Figure 4

Recovery Procedure

Insert the supplied plastic key into the input (Figure 1) rotate by 90 ° and pull it until the call point will be reset to it's original position.



WARRANTY

Olympia Electronics guarantees the quality, condition and operation of the goods. The period of warranty is specified in the official catalogue of Olympia Electronics and also in the technical leaflet, which accompanies each product. This warranty ceases to exist if the buyer does not follow the technical instructions included in official documents given by Olympia Electronics or if the buyer modifies the goods provided or has any repairs or re-setting done by a third party, unless Olympia Electronics has fully agreed to them in writing. Products that have been damaged can be returned to the premises of our company for repair or replacement, as long as the warranty period is valid.

Olympia Electronics reserves the right to repair or to replace the returned goods and to or not charge the buyer depending on the reason of defection. Olympia Electronics reserves the right to charge or not the buyer the transportation cost.

HEAD OFFICE

72nd km. O.N.R. Thessaloniki-Katerini
P.C. 60300 P.O. Box 06 Eginio Pierias Greece
www.olympia-electronics.com
info@olympia-electronics.gr

BS-536

MANUAL CALL POINT



TECHNICAL CHARACTERISTICS	
OPERATION VOLTAGE	10-30V DC
ALARM CURRENT	8-30mA
ALARM RESISTOR	470ohms
USE	Indoor
TYPE	Type A
DEGREES OF COVER PROTECTION	IP 20
PRODUCED IN ACCORDANCE WITH	EN 54-11
OPERATION TEMPERATURE RANGE	-10 to 70 °C
RELATIVE HUMIDITY	Up to 95%
CONSTRUCTION MATERIALS	ABS/PC
EXTERNAL DIMENSIONS	98 x 94 x 58 mm
TYPICAL WEIGHT	180gr.
GUARANTEE	2 years

Thank you for your trust in our products
Olympia Electronics - European manufacturer

GENERAL

This is an emergency fire alarm button. Use this call point to manually activate the alarm system at the sight of fire. It is essential for it to exist in cooperation with other detectors. Using it is very simple. All you have to do is push the see-through plastic cover and the call point automatically activates the alarm system.

In this case the see-through plastic cover does not brake but it can be reset to it's original position with the special plastic key which is included.

This way you can test a specific call point and maintenance the fire detection panel as well.

It is used as a signal to evacuate the building in case of fire.

In every fire detection system it is essential that you place one call point besides the control panel and the rest mainly in corridors and exits of the building.

Installation and Connection

1. First, unfasten the retailing screws and remove the plastic cover.
2. Remove carefully the interior parts of the device and use the supplied mounting parts to the A-A or B - B positions (Figure 2).
3. During their installation must be attention taken that the distance between two buttons does not exceed 30 m and all buttons should be placed at a height of about 1.4 m from the floor.(Figure 1).

4. Inside the call point there are four special terminal blocks with indications IN and OUT used to fasten the cables. The connection is made direct to the zone of the control panel regardless of polarity. If in a zone there are more than one then they are connected in parallel. If in the same zone there are detectors then the call point is connected in parallel with the detectors of this specific zone.

If the last device installed on a zone is a call point then you must place on it the resistor which was removed from that zone. The Figure 4 below shows the connections between two call points and a detector to a zone of a fire detection panel It also shows the connection of the resistor to the last button of that zone.

5. Reinstall the parts which have been removed during the previous steps and the device is ready to operate.

Certification

The manual call point BS-536 is certified from EVPU and LPCB (1010c/01). Also EVPU controls the production under CPD number :

BS-536	manual call point	
1293-CPD-0256		11
EN-54-11: 2001 + A1: 2005		
KOLINDROS PIERIAS		
60061 HELLAS		for a safer world

INSTALLATION INSTRUCTIONS

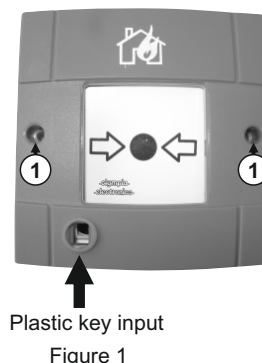


Figure 1

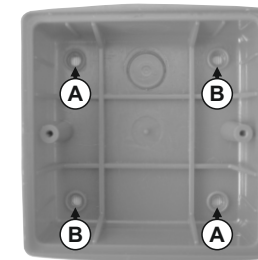


Figure 2

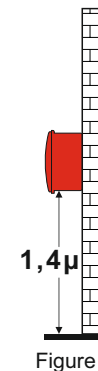


Figure 3

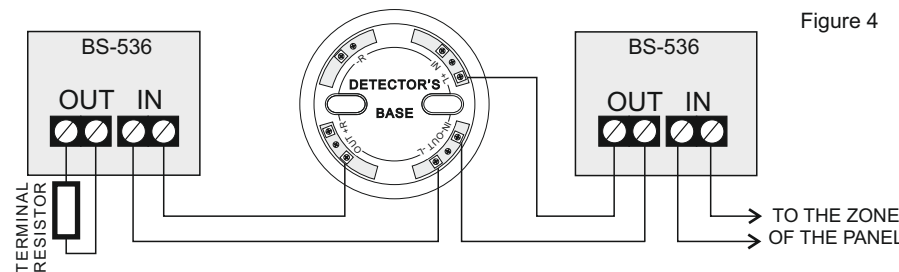
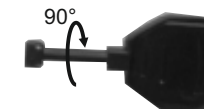


Figure 4

Recovery Procedure

Insert the supplied plastic key into the input (Figure 1) rotate by 90 ° and pull it until the call point will be reset to it's original position.



WARRANTY

Olympia Electronics guarantees the quality, condition and operation of the goods. The period of warranty is specified in the official catalogue of Olympia Electronics and also in the technical leaflet, which accompanies each product. This warranty ceases to exist if the buyer does not follow the technical instructions included in official documents given by Olympia Electronics or if the buyer modifies the goods provided or has any repairs or re-setting done by a third party, unless Olympia Electronics has fully agreed to them in writing. Products that have been damaged can be returned to the premises of our company for repair or replacement, as long as the warranty period is valid.

Olympia Electronics reserves the right to repair or to replace the returned goods and to or not charge the buyer depending on the reason of defection. Olympia Electronics reserves the right to charge or not the buyer the transportation cost.

HEAD OFFICE

72nd km. O.N.R. Thessaloniki-Katerini
P.C. 60300 P.O. Box 06 Eginio Pierias Greece
www.olympia-electronics.com
info@olympia-electronics.gr