



Essential SmartBright G2 LED Floodlight

BVP132 LED16/CW 20W 220-240V WB

Essential SmartBright G2 LED floodlight comes with a compact and sturdy design. It is light weight with die-cast aluminum housing and corrosion-proof powder coating, suitable for general outdoor application. High efficiency designed with latest LED technology, achieves substantial energy savings comparing to conventional floodlights.

Product data

General Information	
Light source color	865 cool daylight
Light source replaceable	No
Driver included	Yes
Optical cover/lens type	Polycarbonate bowl/cover flat
Luminaire light beam spread	100°
Control interface	-
Connection	Flying leads/wires
Cable	Cable 0.25m without plug
Protection class IEC	Safety class I
Flammability mark	-
CE mark	CE mark
Light source engine type	LED
Light Technical	
Standard tilt angle posttop	-
Standard tilt angle side entry	-
Operating and Electrical	
Input Voltage	220 to 240 V

Input Frequency	50 to 60 Hz
Power Factor (Min)	0.9
Controls and Dimming	
Dimmable	No
Mechanical and Housing	
Housing Material	Aluminum die cast
Optical cover/lens material	Polycarbonate
Mounting device	Mounting bracket adjustable
Optical cover/lens finish	Textured
Overall length	130 mm
Overall width	116.5 mm
Overall height	28 mm
Color	Black
Approval and Application	
Ingress protection code	IP65 [Dust penetration-protected, jet-proof]
Mech. impact protection code	IK06 [1 J]

Essential SmartBright G2 LED Floodlight

Initial Performance (IEC Compliant)

Initial luminous flux (system flux)	1600 lm
Luminous flux tolerance	+/-10%
Initial LED luminaire efficacy	80.00 lm/W
Init. Corr. Color Temperature	6500 K
Init. Color Rendering Index	>80
Initial chromaticity	SDCM <7
Initial input power	20 W
Power consumption tolerance	+/-10%

Application Conditions

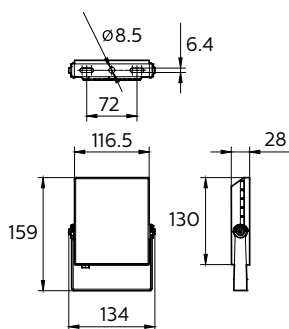
Ambient temperature range	-40 to +45 °C
---------------------------	---------------

Product Data

Full product code	911401859298
Order product name	BVP132 LED16/CW 20W 220-240V WB
EAN/UPC - Product	8710163314358
Order code	911401859298
Numerator - Quantity Per Pack	1
Numerator - Packs per outer box	12
Material Nr. (12NC)	911401859298
Net Weight (Piece)	0.370 kg



Dimensional drawing



BVP131/132/133/135 LED WB

